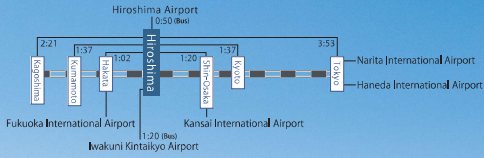


HIROSHIMA

"Shinkansen" Bullet train • Bus



Atomic Bomb Dome

HIROSHIMA

Come Explore Hiroshima and its two World Heritage Sites



Itsukushima Shrine

A panoramic view from the top of Mt. Misen, Miyajima.



広島観光コンベンションビューロー
Hiroshima Convention & Visitors Bureau



Hiroshima Convention & Visitors Bureau
Meeting Resolutions
<https://www.hiroshimacvb.jp/en/>



Dive! Hiroshima
The Official Guide to Hiroshima
<https://dive-hiroshima.com/en/>



Two World Heritage sites of “Aquapolis Hiroshima”

A-bomb Dome and Itsukushima Shrine

The two historic sites capture the hearts of visitors from all over the world.

A-bomb Dome

The A-bomb Dome was constructed in 1915 as Hiroshima Prefectural Commercial Exhibition Hall. In 1933, the name was changed to the Hiroshima Prefectural Industrial Promotion Hall. This western-style building with a bold design was fairly unique in those days, and the modern scenery with the building reflected on the river surface was popular as a tourist attraction in Hiroshima.

At 8:15 on August 6, 1945, the first atomic bomb in human history exploded. The Hiroshima Prefectural Industrial Promotion Hall, although exposed to the A-bombing near the Hypocenter, miraculously escaped destruction. The ruins came to be called the “A-bomb Dome” due to the shape of the exposed metal dome framework at its summit.

In 1996 the A-bomb Dome was registered on the UNESCO World Heritage List as an architecture that conveys the horrors of A-bombing.

G 7
Hiroshima
Summit 2023

Held in May 2023



Itsukushima Shrine

Itsukushima Island is well-known as one of the three great views of Japan called “Aki-no-Miyajima” (Miyajima of Aki).

Itsukushima Shrine is said to have been founded on this island during the Asuka period, in the 6th century. The main building was constructed by Tairano Kiyomori in the latter half of the Heian period, in the 12th century. At that time, the shrine was renovated to have an elegant appearance, which can still be seen today. A shrine constructed in the sea, forming an architectural beauty unique in the world, as well as the natural beauty of Mt. Misen, a mountain covered with a primeval forest that creates a background to the shrine. With their harmony rated highly, the shrine was registered on the World Cultural Heritage list in 1996.

Itsukushima Shrine shows a variety of expressions depending on the ebb and flow of the tide - an elegant appearance floating on the sea during high tide and the tideland that provides a walking path to the giant *torii* gate shown during the low tide.



Hiroshima Peace Memorial Museum

This museum collects and displays belongings left by A-bomb victims, as well as photos and other materials that convey the horror of the A-bombing, introduces the history of Hiroshima both before and after the event as well as the current situation of the Nuclear Age, and realistically conveys the true nature of the damage caused by the A-bombing.



Children's Peace Monument

Dedicated to Sadako Sasaki, a young girl who suffered from and died of leukemia caused by the A-bombing, this monument was constructed to console the spirits of all child A-bomb victims.



Cenotaph for the A-bomb Victims

(Memorial Monument for Hiroshima, City of Peace)
The cenotaph, which houses the Register of A-bomb victims, was designed in the shape of a clay figure of an ancient house in the hope of protecting the spirits of deceased victims from rain.



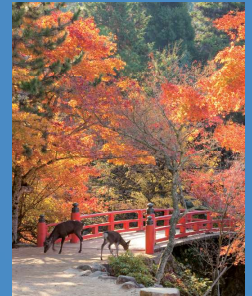
Itsukushima Shrine

The brilliant contrast between the deep greenery of Mt. Misen at the back of the shrine and the vivid vermilion shrine building and giant *torii* gate standing on the blue sea is a beauty suggestive of the Palace of the Dragon King.



Cloister of Itsukushima Shrine

The floor boards help lower the pressure of seawater, which is raised at the time of high tide. Paying attention to the technique of Japanese carpenters is one of the entertaining aspects of the shrine.



Momijidani Park

The attractiveness of this park is the chance to enjoy its natural beauty, which shifts from cherry blossoms in spring to fresh green leaves in summer, and then autumn leaves.



Full of attractions at every turn

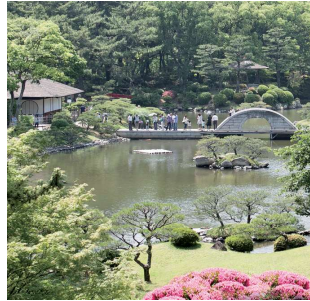
Explore Hiroshima and discover its untold stories.

In Hiroshima city



■ Hiroshima Castle

This is a castle built by Mori Terumoto in 1589. The castle tower, which used to be designated as a national treasure, was destroyed by the A-bombing, and its appearance was restored to its original form in 1955.



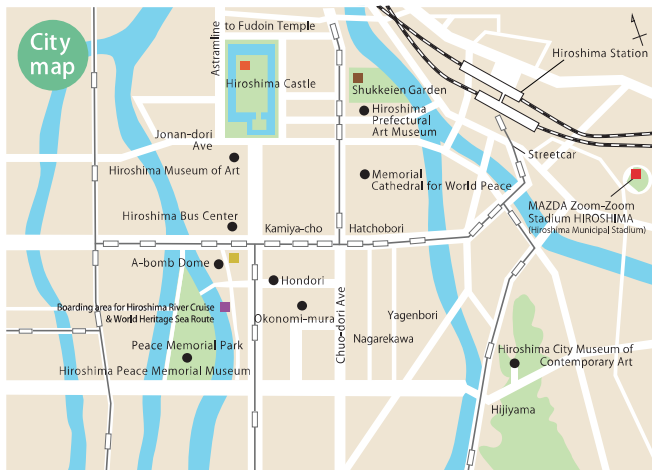
■ Shukkeien Garden

This is a circuit-style garden constructed in 1620 as a villa of the Asano clan, by Ueda Soko, who was well-known as a master of the tea ceremony. The garden is also famous for its seasonal flowers.



■ Hiroshima River Cruise

An exotic pleasure boat for sailing around "aquapolis Hiroshima" enables you to view the city of Hiroshima and A-bomb Dome from angles that are usually inaccessible.

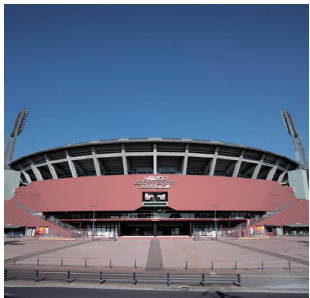


This route connects Peace Memorial Park and Miyajima. The attraction of this route is the chance to appreciate the beauty of many islands in the Seto Inland Sea during the cruise.



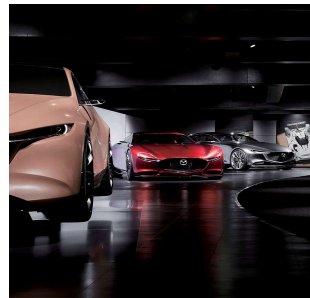
■ Hiroshima Orizuru Tower

An observation deck from which visitor can view the city and Atomic Bomb Dome. There is also a floor where visitors can enjoy digital contents, and a souvenir shop that sells a wide variety of local goods.



■ MAZDA Zoom-Zoom Stadium

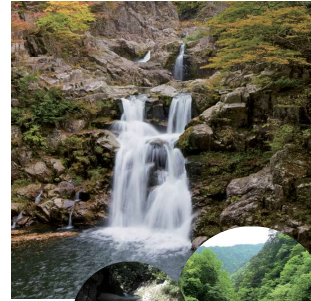
This is the new home stadium of the Hiroshima Toyo Carp, completed in 2009. It's a unique ballpark where fans can enjoy the game in their own style, with features like "Sunkissed Seats," "Steepoveria," and "Cozy Terrace." They also sell highly popular Carp merchandise.



■ Mazda Museum (Fuchu, Aki District)

The museum introduces the origins of MAZDA's manufacturing spirit, its breakthrough and internationalization as a comprehensive automaker, its technological innovations, brand strategy, and design concepts. The museum also houses a merchandise store with original goods and model cars.

Around Hiroshima



● Sandankyo Gorge (Aki-Ota-Cho)

Sandankyo Gorge, designated as a national special scenic beauty, is a large 16 km-long gorge stretching along the Shiwagi River, a branch of the Ota River. It contains a number of breathtaking scenic sights that include waterfalls, deep pools and huge boulders. It is said this is the art museum created by mother nature herself. You can enjoy hiking here just one-hour riding from Hiroshima City.



● Miyajima Omotesando Arcade (Miyajima, Hatsukaichi city)

This is a shopping street that stretches for about 350 meters leading to Itsukushima Shrine. Along this street, you'll find shops selling traditional crafts, souvenirs, Miyajima delicacies including oysters and conger eel, and momiji manju (maple leaf-shaped cakes).



● Kintaikyō Bridge (Iwakuni City, Yamaguchi Prefecture)

This wooden five-arch bridge over the Nishiki River is one of the three most excellent bridges of Japan.



● Rabbit Island (Okunoshima)

Okunoshima is a small island in the Seto Inland Sea with a circumference of about 4 km. The island is known for its wild rabbits that roam freely, and many tourists visit the island for relaxation.



● Saijo Sakagura Dori avenue (Higashihiroshima City)

How about walking down the avenue and touring various sake breweries?



● Yamato Museum (Kure City)

In this museum, visitors can enjoy powerful displays, such as a one-tenth scale model of the Battleship Yamato and Zero Fighter Type 62, and can learn about the science of ships. Scheduled for a major renovation from mid-2024. Please check our website for the opening schedule.

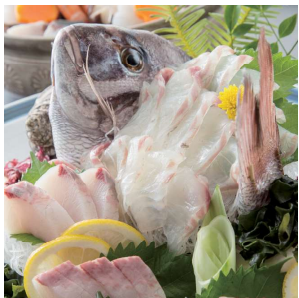


● Iron Whale Museum (Kure City) (JMSDF Kure Museum)

This is Japan's first museum that displays a real submarine on the grounds. Visitors can explore inside the submarine.



Anago meshi (conger eel served on rice)
Anago meshi is made by spreading pieces of moderately fatty conger eel from coastal waters prepared in kabayaki style (boned fish broiled with a sweet and salty sauce) on top of rice in a bowl.



Fish dishes from the Seto Inland Sea
An array of fish and shellfish will appear, having been raised in the calm sea unique to the Seto Inland Sea.



Oysters
Large and richly flavored Hiroshima oysters are grown in the nourishing Seto Inland Sea.



Hiroshima okonomiyaki (Hiroshima-style savory pancake)
Hiroshima-style okonomiyaki is very healthy because it contains lots of cabbage. It is grilled on an iron plate with various ingredients piled up on top of another.



Tsukemen
Tsukemen, or dipping noodles, is a dish of ramen noodles and crispy vegetables that are dipped and eaten in separately served spicy broth.



Tantanmen noodles without soup
The dish is so stimulating, with its paralyzing sensation from Japanese pepper (prickly ash) and spicy taste from chili pepper, that it is only eaten after mixing all the ingredients dozens of times.



Hiroshima Ramen
Hiroshima ramen features relatively thin, straight noodles in pork bone broth seasoned with soy-sauce. The local specialty has a lot of fans because it's simply delicious!



Momiji Manju (maple-leaf-shaped cake)
A famous confectionery representing Miyajima. In addition to traditional smooth, sweet red-bean paste, Momiji manju are made with a variety of fillings, such as custard, chocolate, and cheese.



Hiroshima Lacquerware
Certified as "The Hiroshima Brand" and selected as a gift item for delegates to the G7 Hiroshima Summit, the product features the refined texture of lacquer coating using traditional techniques while being suitable for everyday use.



Sake
Characterized by their mellow, sweet flavor, sake produced in Hiroshima are called "Onna-zake" (feminine sake). Perfect as a drink alone but with meals, too.



Kumano Brushes
Along with Kumano calligraphy brushes and pintbrushes, there are also Kumano makeup brushes, which are beloved by professional makeup artists in Hollywood for their incomparable softness against the skin.

The Three Great Festivals in Hiroshima



Tokasan
Place: Chuo dori, Hiroshima-city
Date: Early June (a three-day event)



Sumiyoshi Festival
Place: Sumiyoshicho, Hiroshima-city
Date: Mid-July (a two-day event)



Ebisu Taisai Festival
Place: Ebisu Shrine, Hiroshima-city
Date: Mid-November (a three-day event)

Okonomiyaki Cooking Experience



You can experience hands-on training with professional-grade cooking equipment and specialized ingredients, allowing you to taste the authentic flavors of a specialty okonomiyaki restaurant. Why not try cooking and enjoying the famous Hiroshima-style okonomiyaki by yourself?

HIROSHIMA KAGURA Regular Performance



Kagura is an agricultural ritual dance to give thanks for the bounty of nature. It offers a captivating experience that you won't find anywhere else, with the dynamic and fluid movements of the dancers, exquisitely ornate costumes, and reverberating sounds of live taiko drums, kagura flute, and hand cymbals played by kagura musicians.

Guided Peace Tour by Bicycle



A guided bicycle tour in which participants ride an electric bicycle and learn about the reconstruction of Hiroshima once reduced to ashes, and how we are trying to bring peace from Hiroshima to the world.

Noblewomen's Period Dress Experience



This is a traditional travel costume called Tsubo-syozoku worn by noblewomen and princesses about 1000 years ago. Enjoy a walk around Miyajima Island in this period costume or a standard Japanese kimono of your choice.

Morning hiking tour with open-air tea ceremony



A 10-minute walk from Hiroshima Station, this is an early morning hiking guided tour set in Hiroshima Toshogu Shrine and Mt. Futaba. Learn about the history of Hiroshima's origins and its recovery from the atomic bombing, and enjoy an open-air tea ceremony with a specially prepared breakfast bento box made from local ingredients at the top of the mountain overlooking the Seto Inland Sea.

River Trekking



Just an hour from downtown Hiroshima, you can enjoy river trekking in Yuki Town, surrounded by beautiful nature with some of the purest water in Hiroshima. It's a real adventure!